

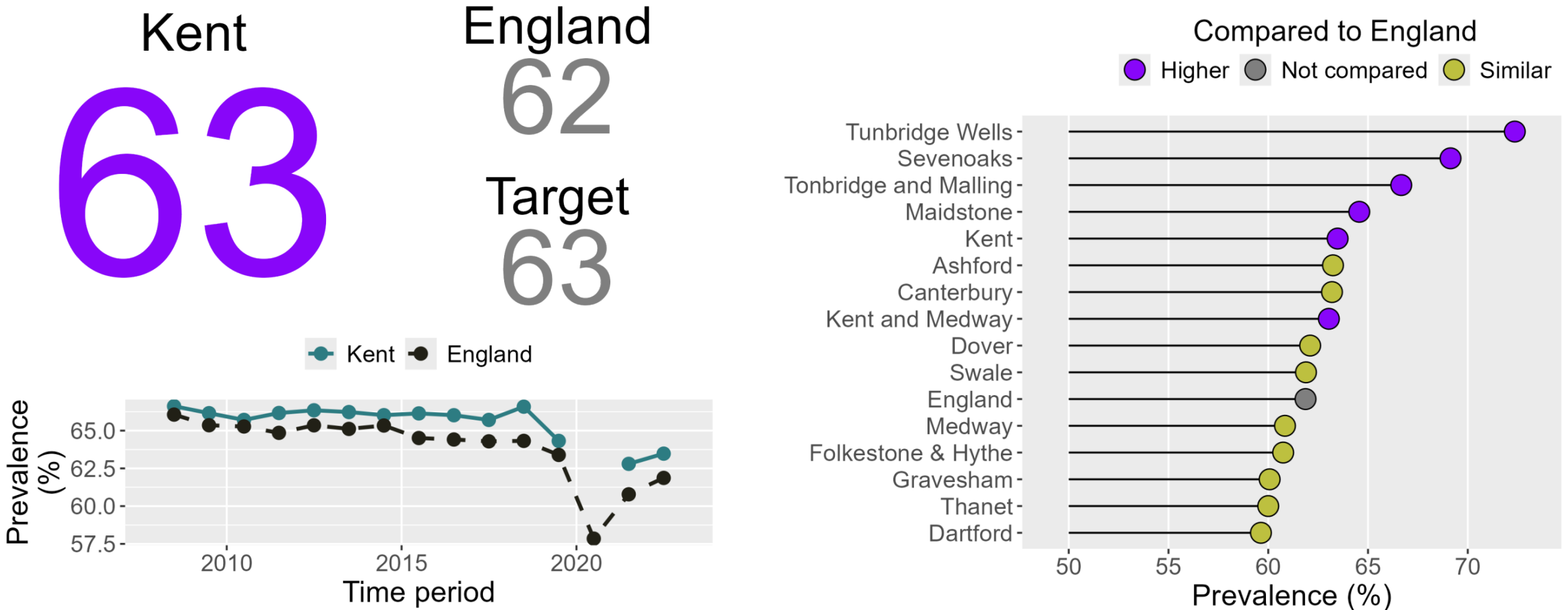
Strategic indicators

HRPH cabinet committee

Kent Public Health Observatory – produced in August 2024

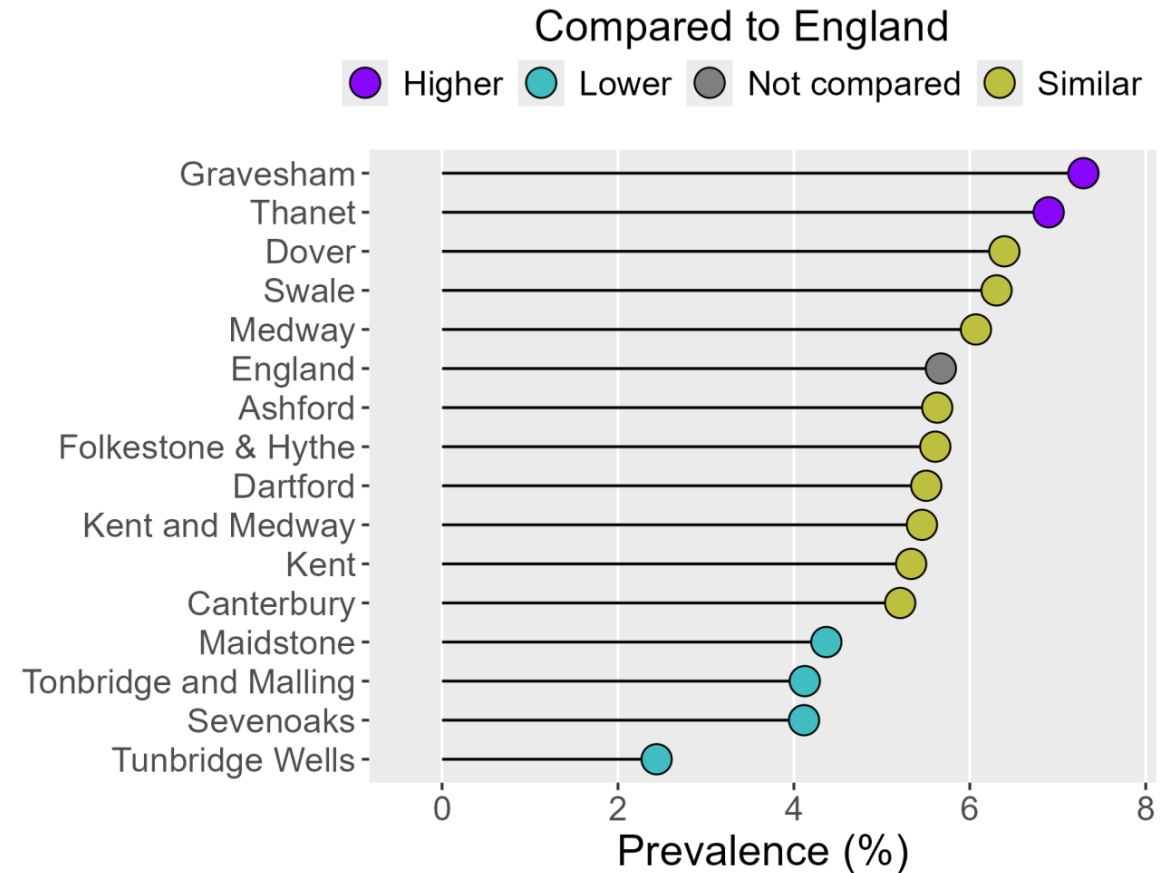
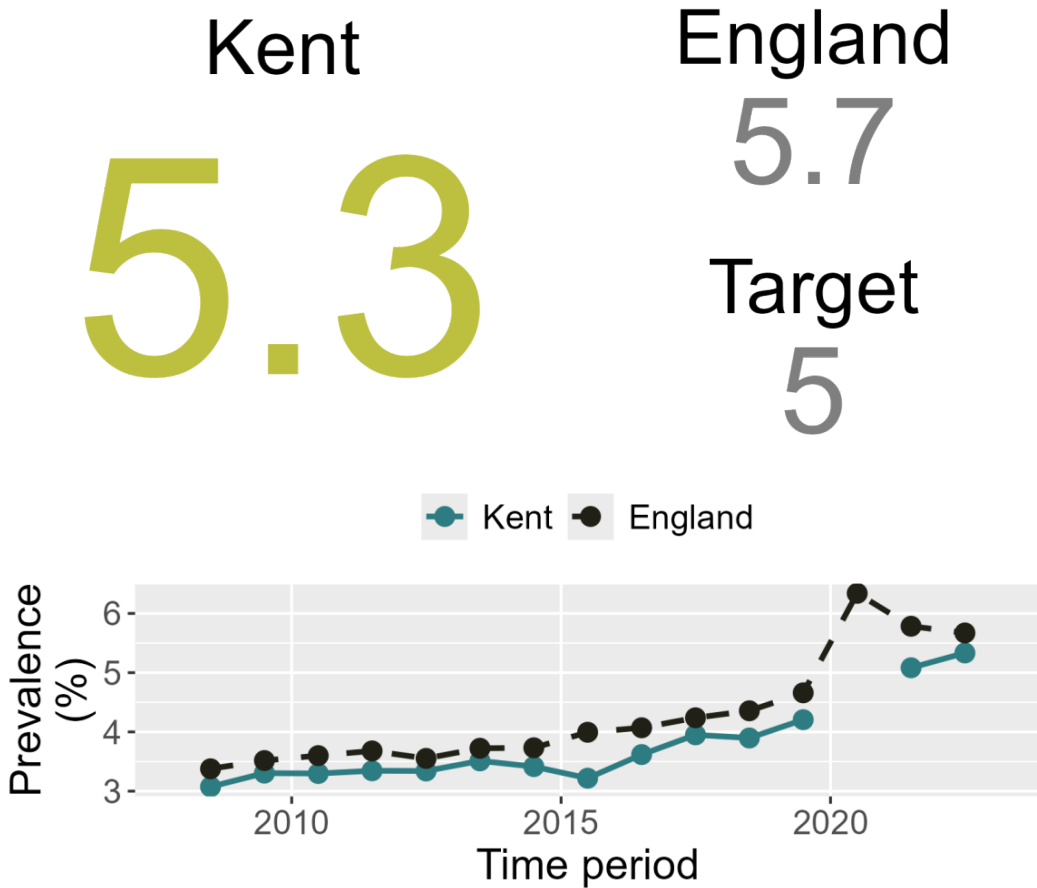
Child healthy weight

Year 6 prevalence of healthy weight, Persons, 10-11 yrs. Latest time period: 2022/23. A higher value is desirable.



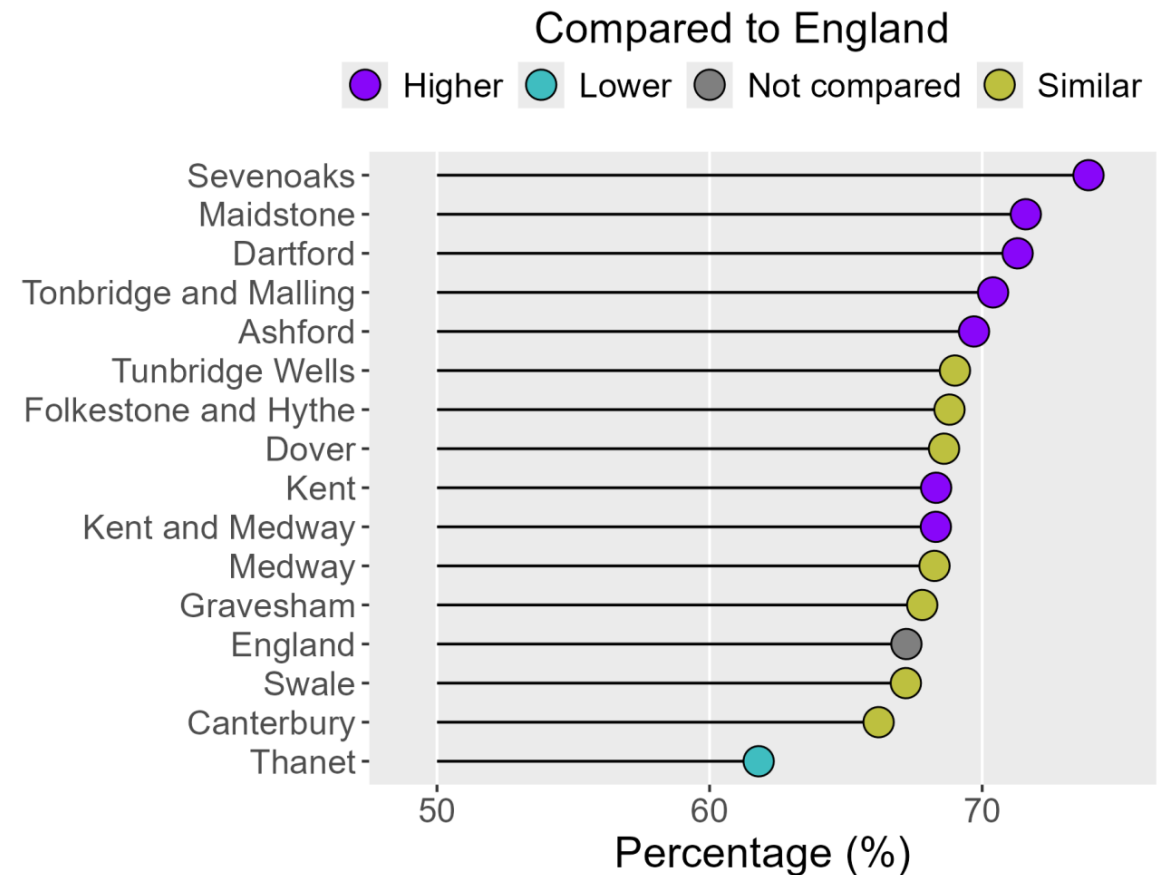
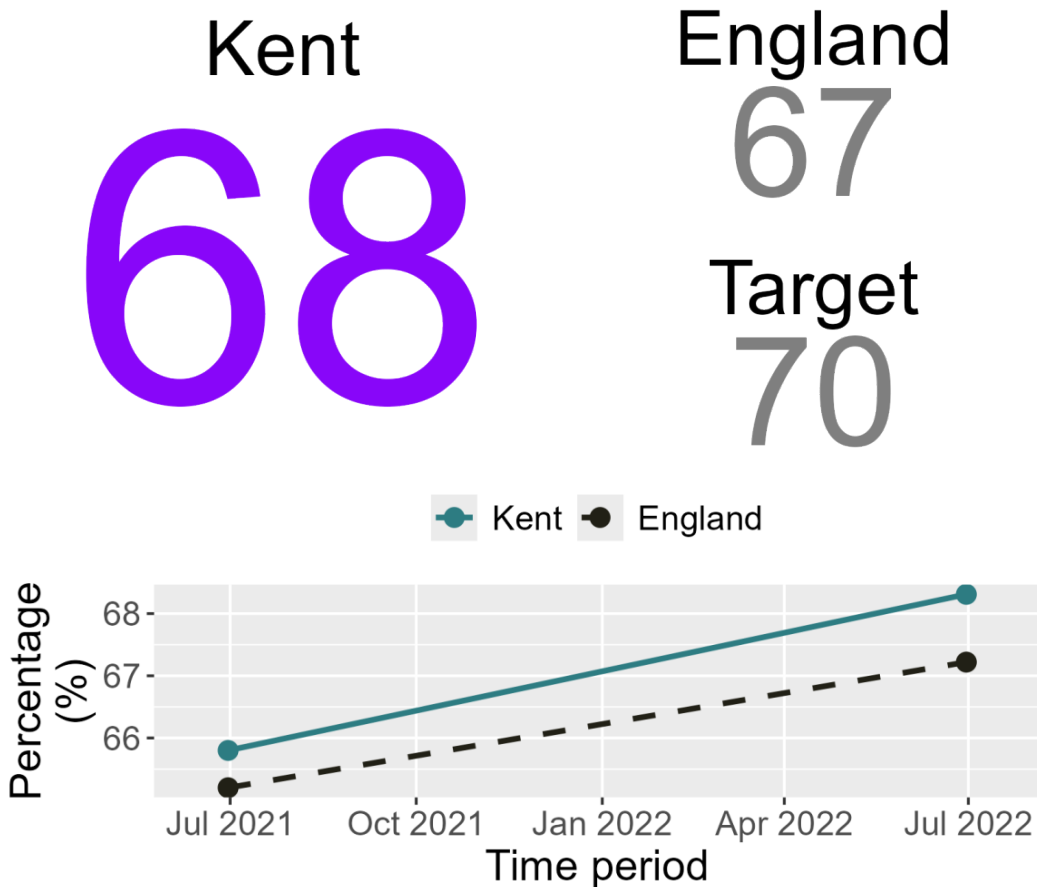
Child severe obesity

Year 6 prevalence of severe obesity, Persons, 10-11 yrs. Latest time period: 2022/23. A lower value is desirable.



School readiness

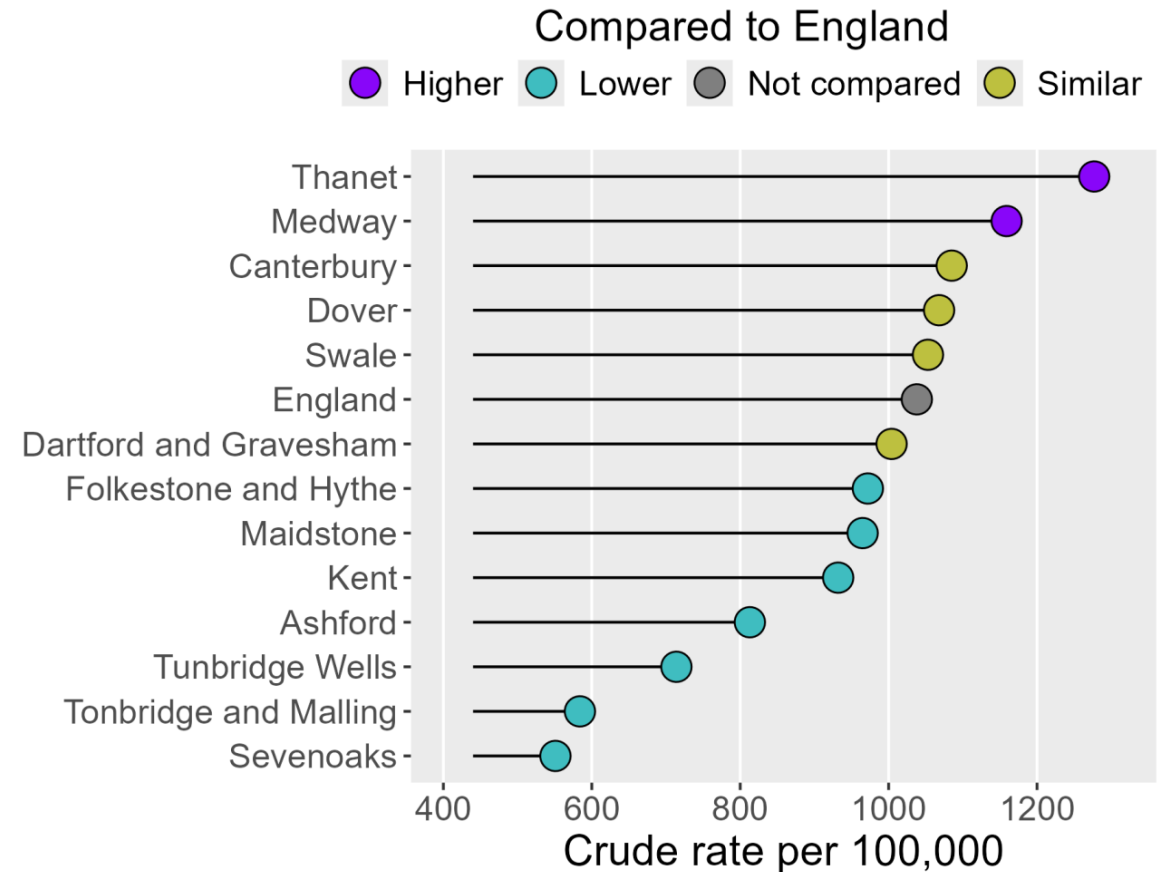
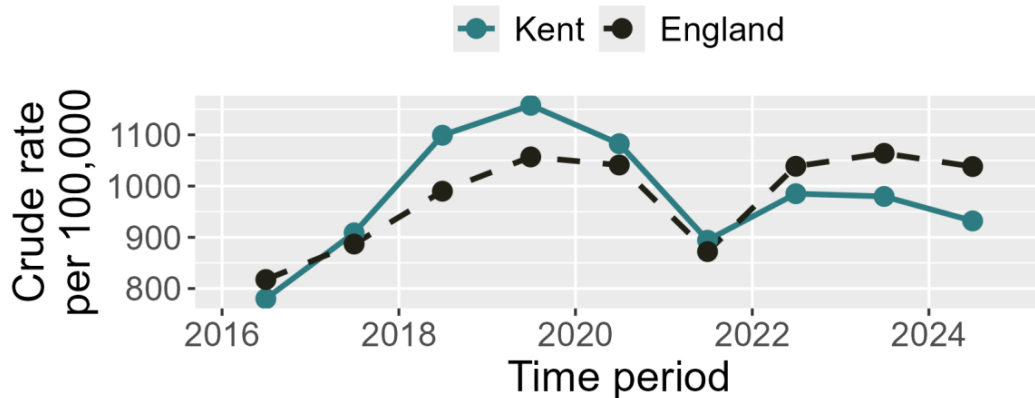
School readiness: percentage of children achieving a good level of development at the end of Reception, Persons, 5 yrs. Latest time period: 2022/23. A higher value is desirable.



Violent crime and domestic robbery

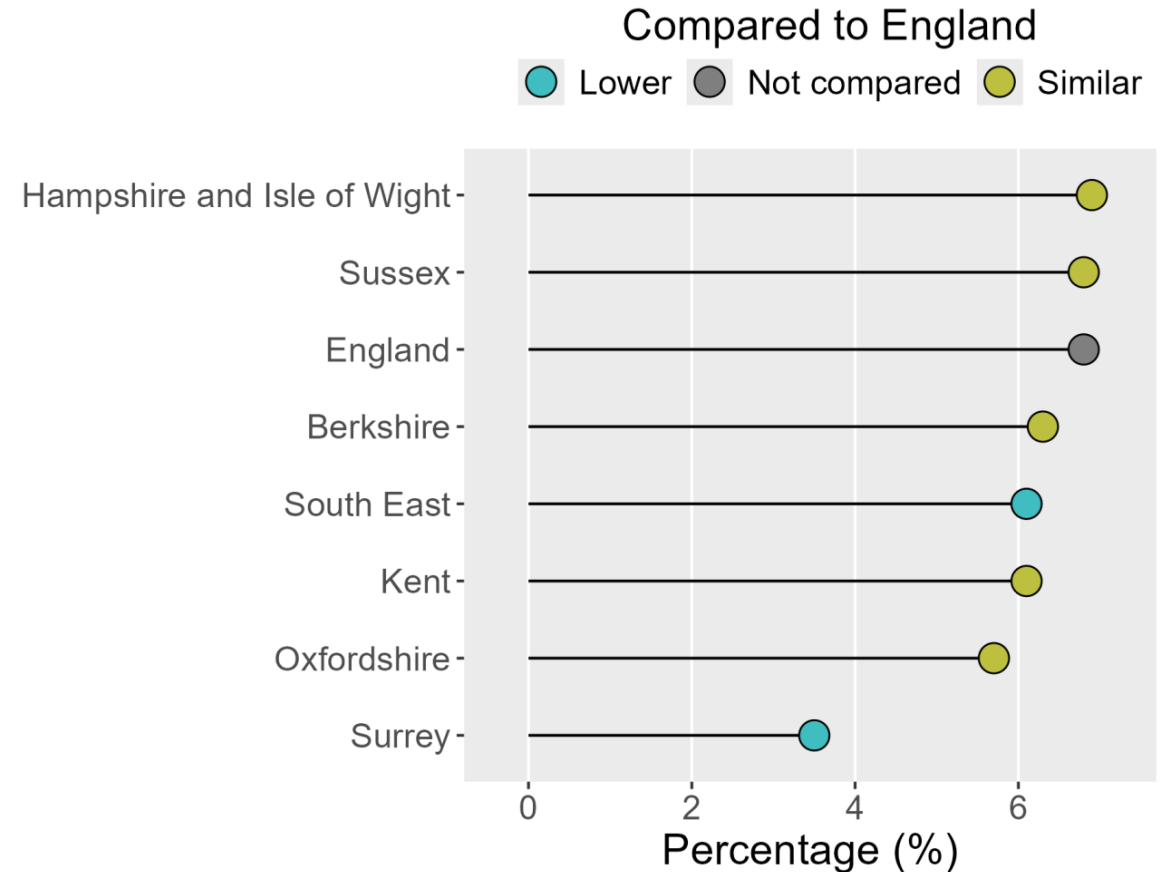
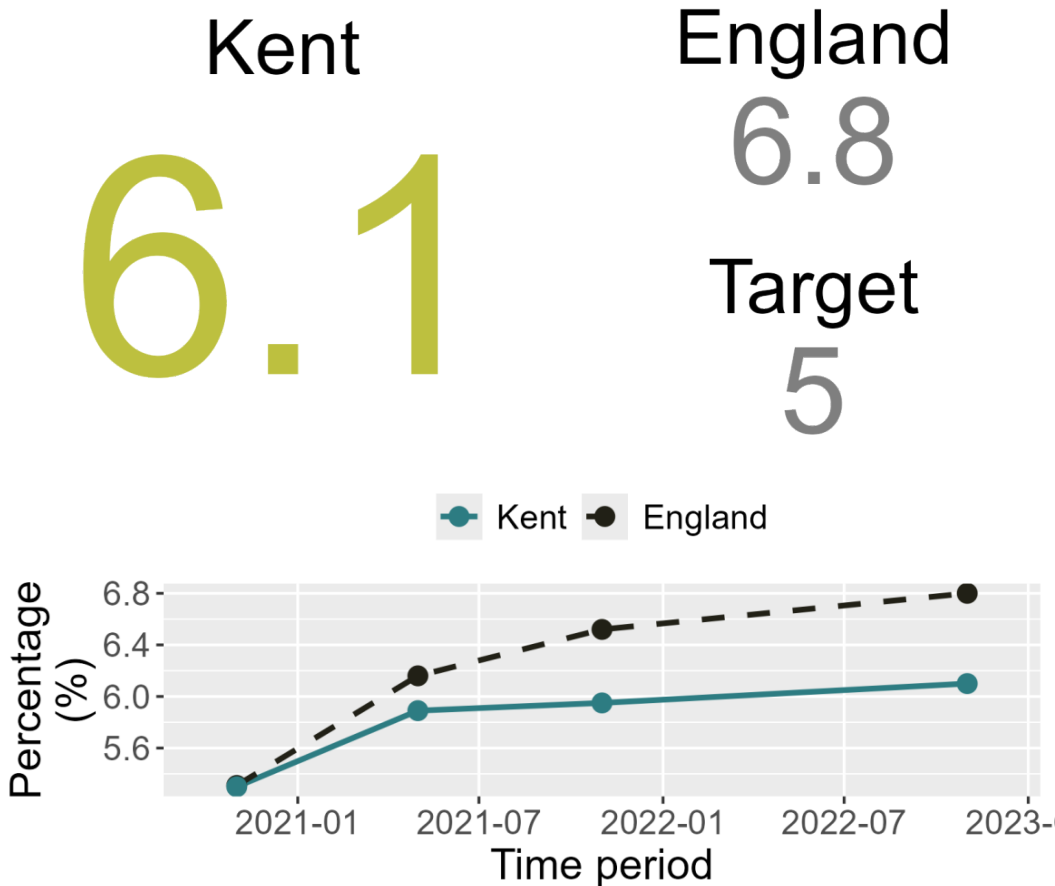
Violent crime and domestic robbery, Persons, All ages. Latest time period: 4 quarters ending Q4 2023/2024. A lower value is desirable.

Kent
932
 England
 1038
 Target
 1038



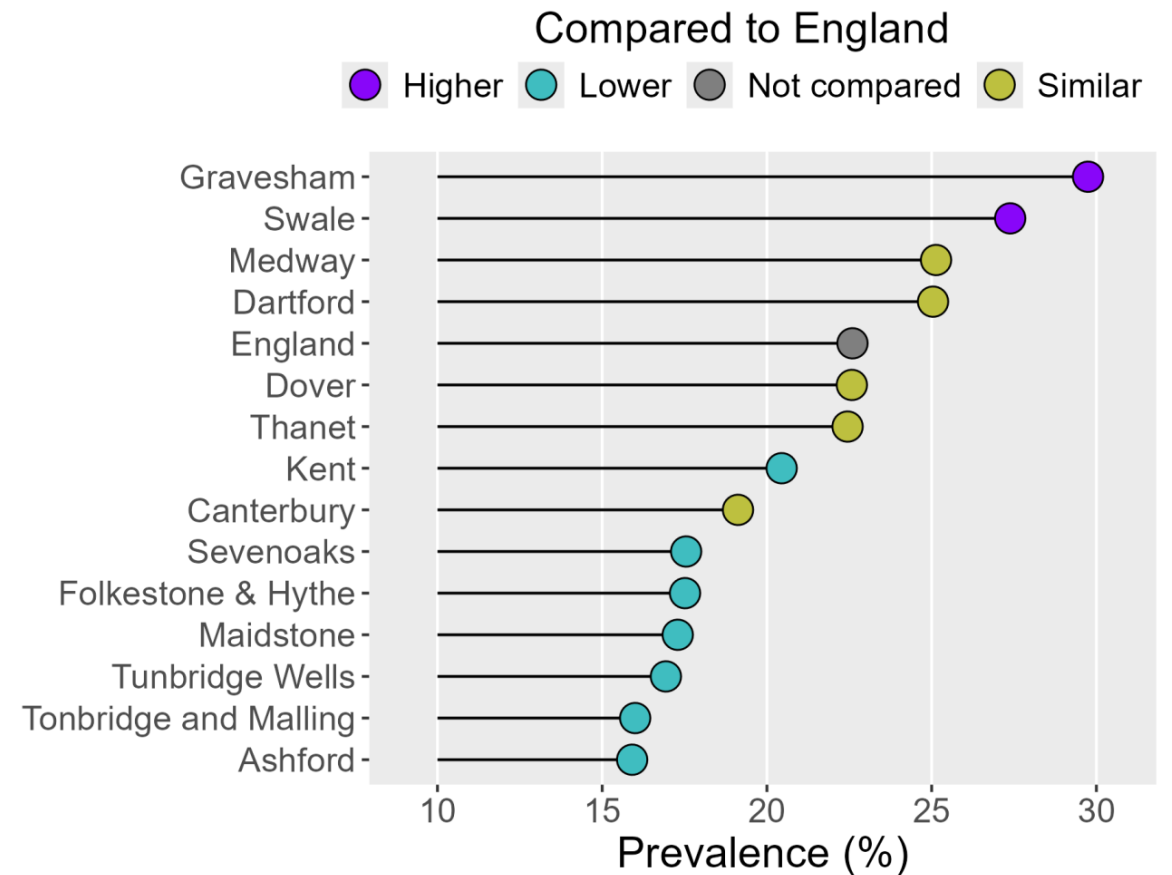
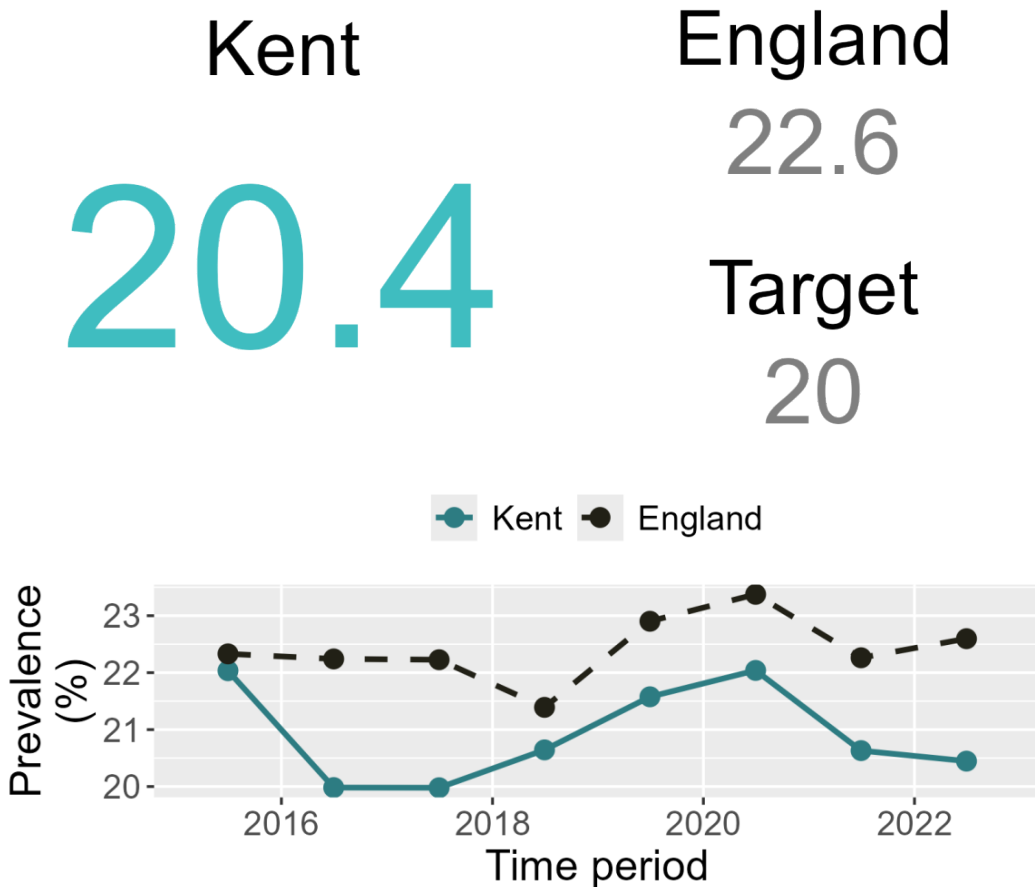
Feeling lonely often or always

Feeling lonely often or always, Persons, 16+ yrs. Latest time period: Nov 2021 to Nov 2022. A lower value is desirable.



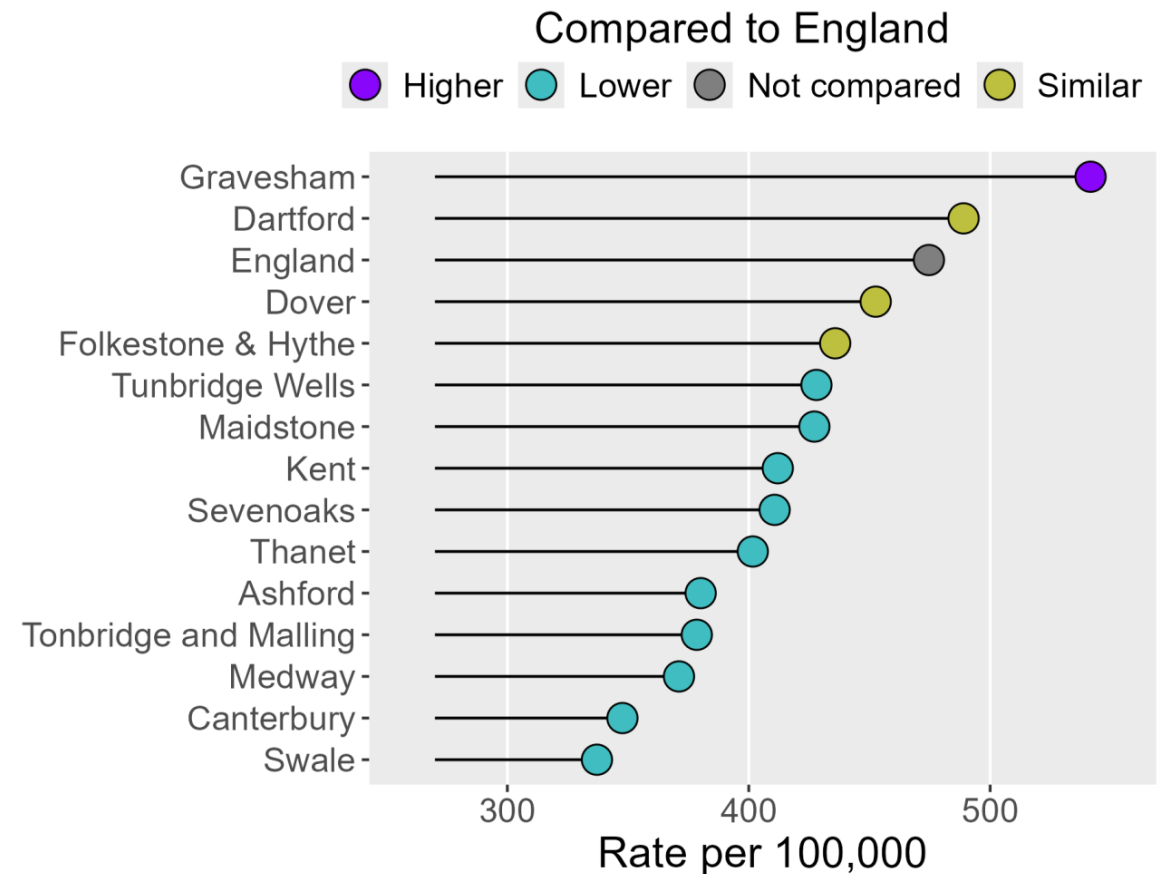
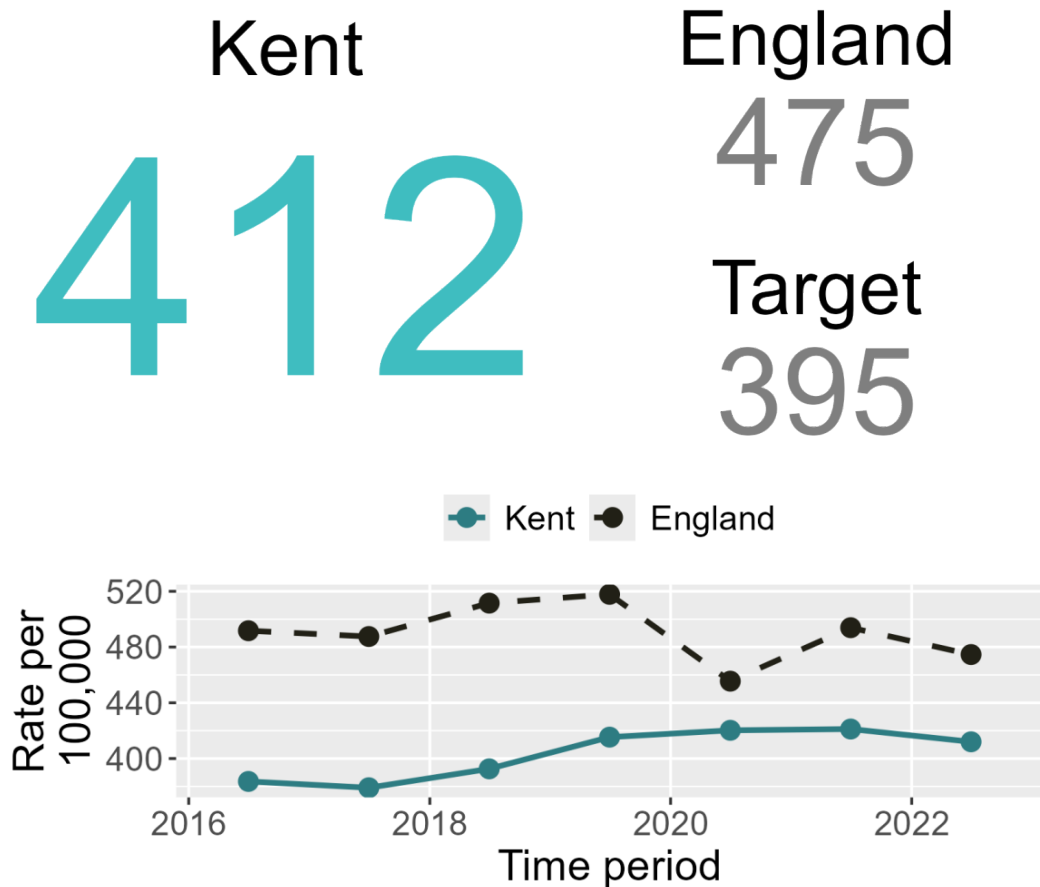
Physically inactive adults

Percentage of physically inactive adults, Persons, 19+ yrs. Latest time period: 2022/23. A lower value is desirable.



Alcohol-related hospital admissions

Admission episodes for alcohol-related conditions (Narrow), Persons, All ages. Latest time period: 2022/23. A lower value is desirable.



Ambulatory Care Sensitive conditions

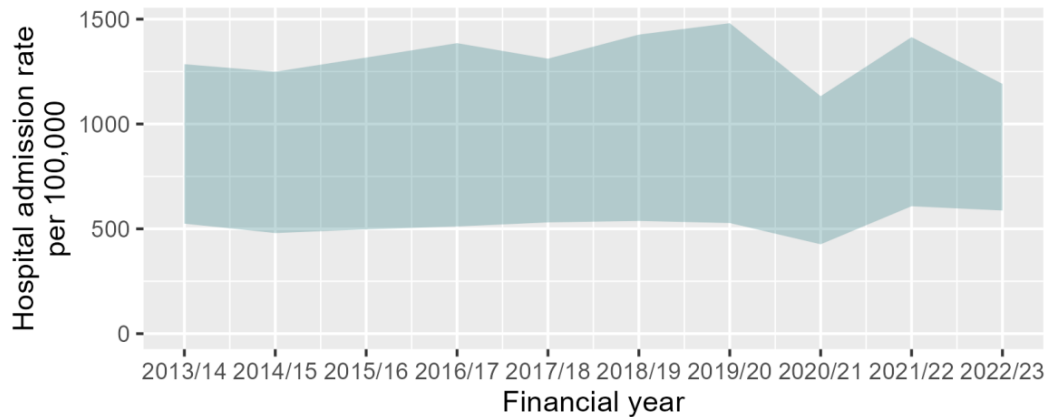
Ambulatory Care conditions deprivation gap, Persons, All ages. Latest time period: 2022/23. Both the ratio and absolute gap are presented. A lower value is desirable.

Kent

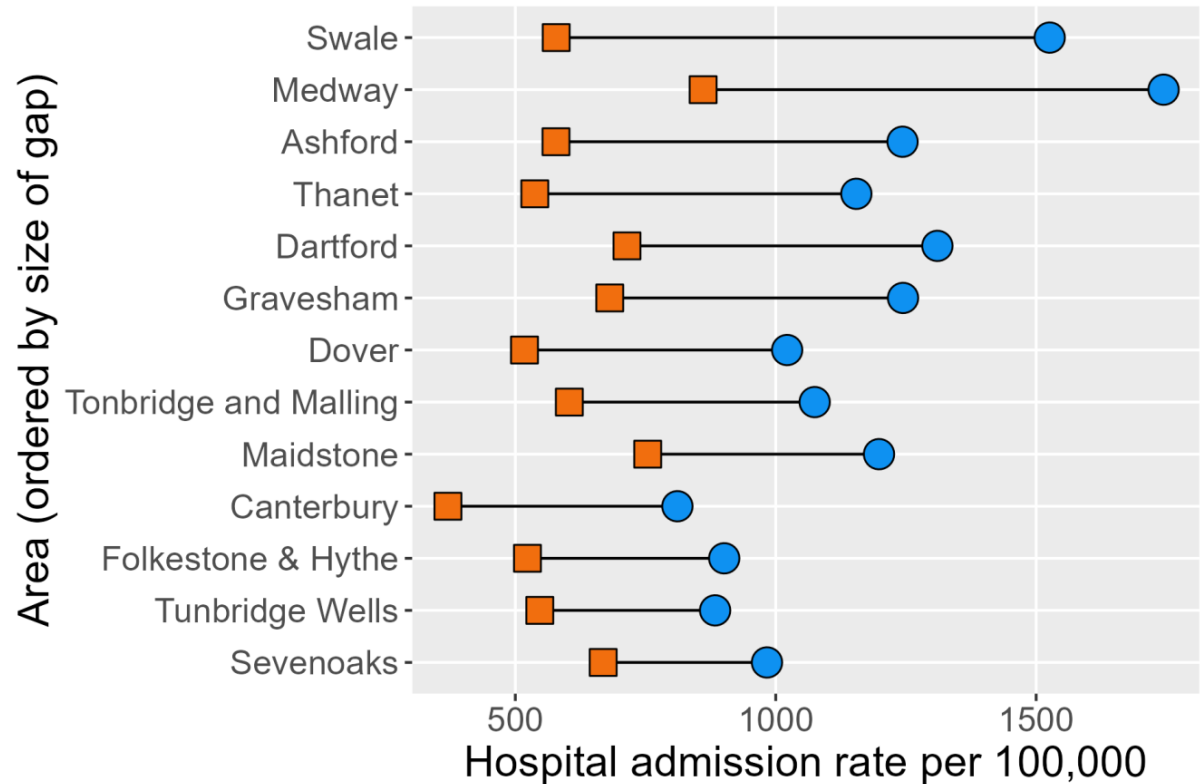
England

2:1

Target
<2:1



Deprivation quintile ● Most deprived ■ Least deprived



Waiting longer than 6 weeks for NHS Diagnostics

Patients waiting six weeks or more for a diagnostic test, from time of referral, Persons, 16+ yrs. Latest time period: June 2024. A lower value is desirable.

K&M ICB

26

England

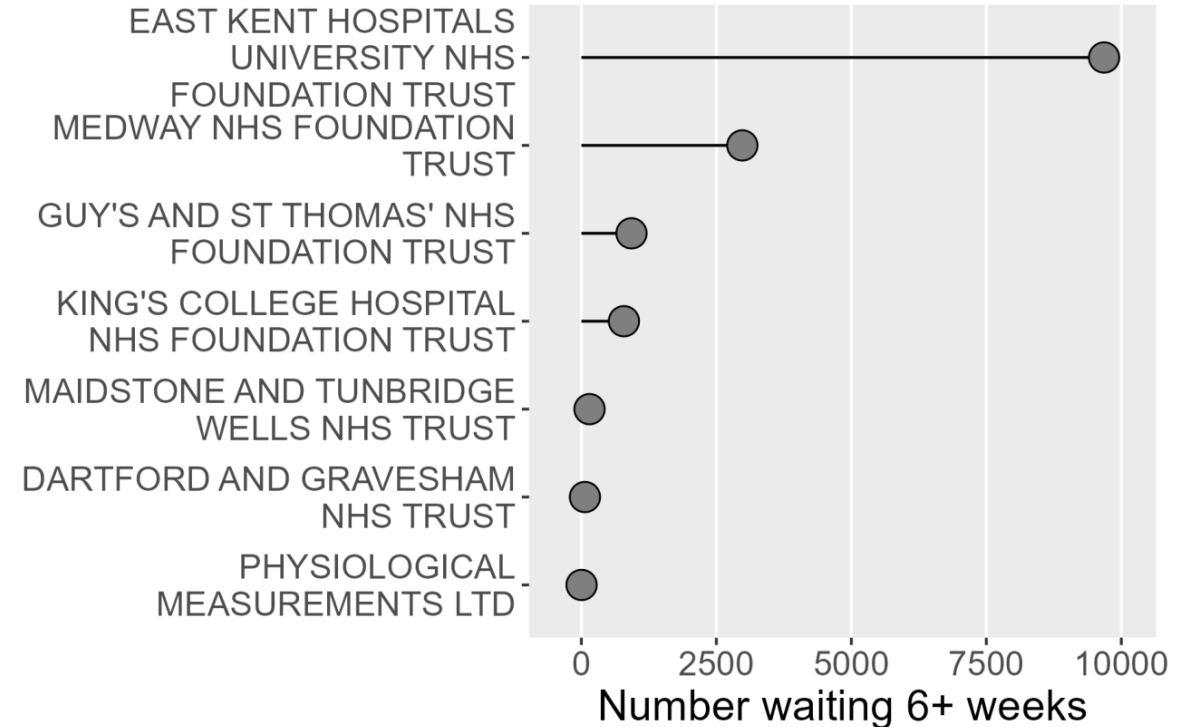
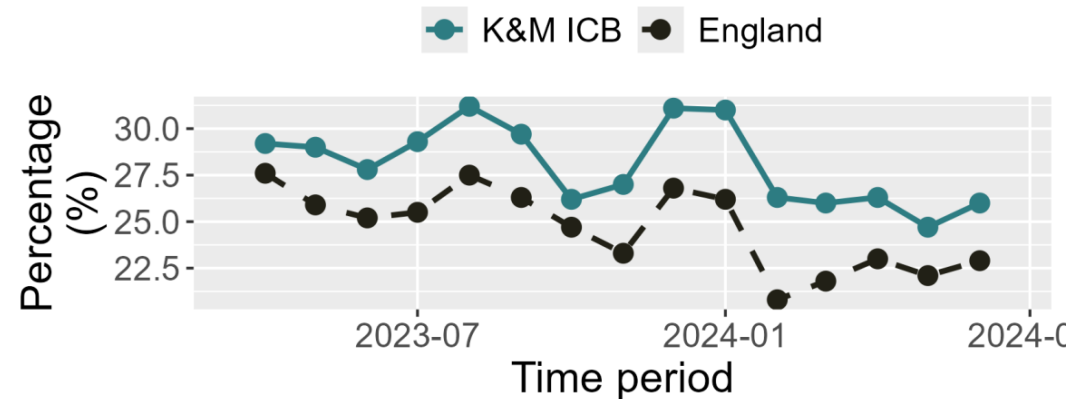
22.9

Target

5

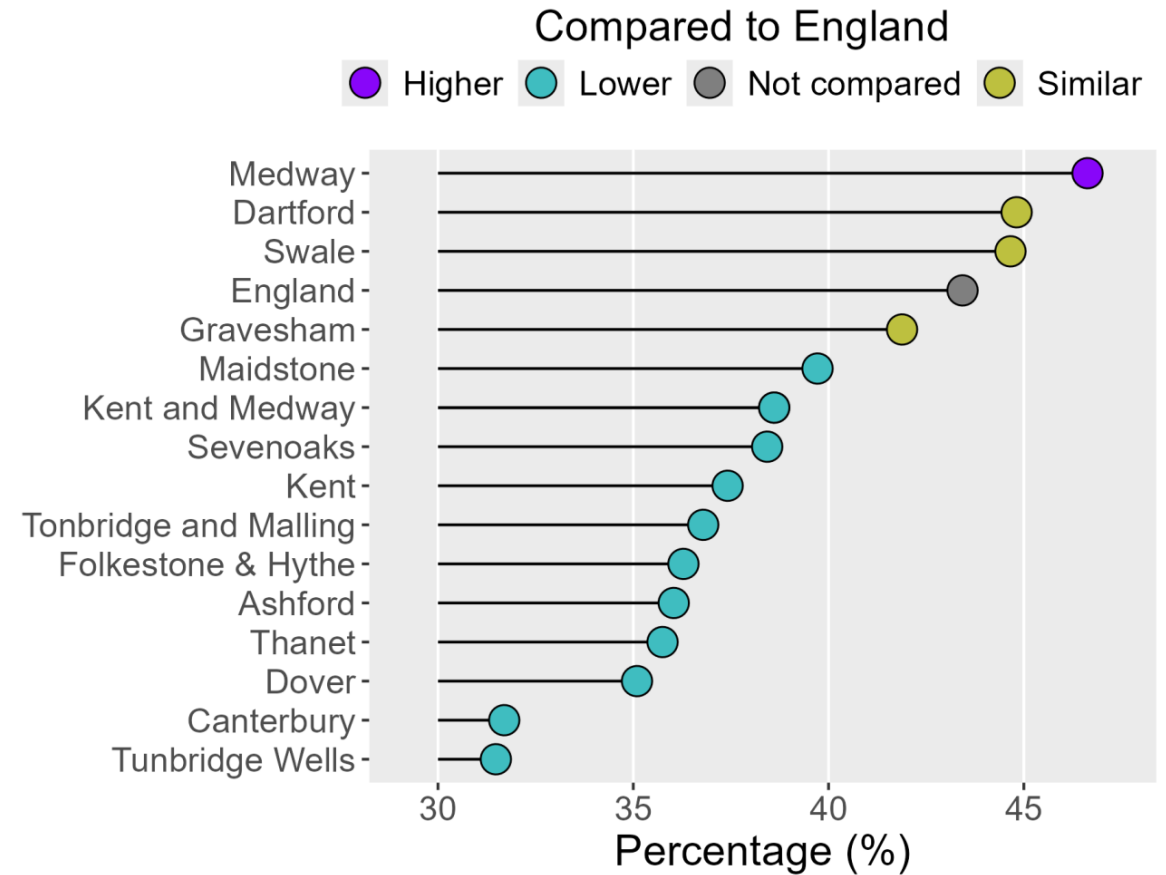
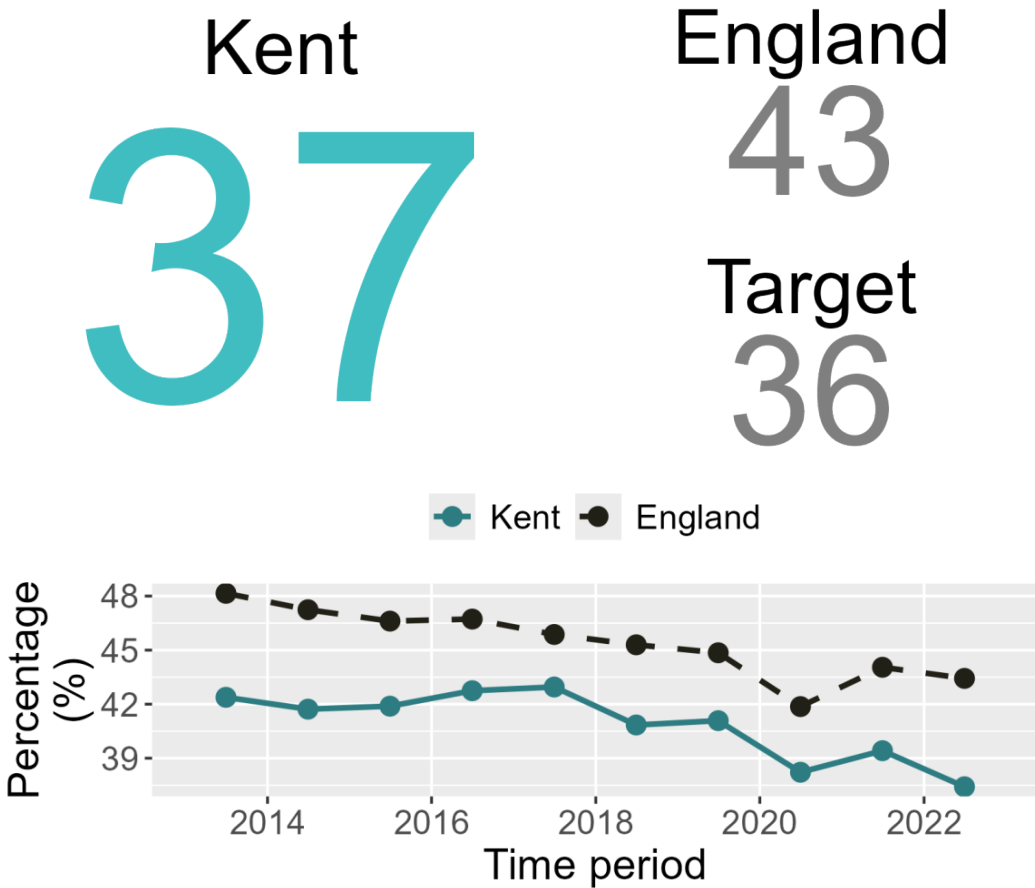
Compared to England

● Not compared



Deaths in hospital

Percentage of deaths that occur in hospital, Persons, All ages. Latest time period: 2022. A lower value is desirable.



Reablement services

Percentage of people aged 65 and over who were still at home 91 days after discharge from hospital into reablement services, Persons, 65+ yrs. Latest time period: 2022/23. A higher value is desirable.

